

Conduent Overview

Maven[®] Disease Surveillance and Tracking System
Health Communities Institutes (HCI) Platform

Agenda

Introductions

Overview of Conduent

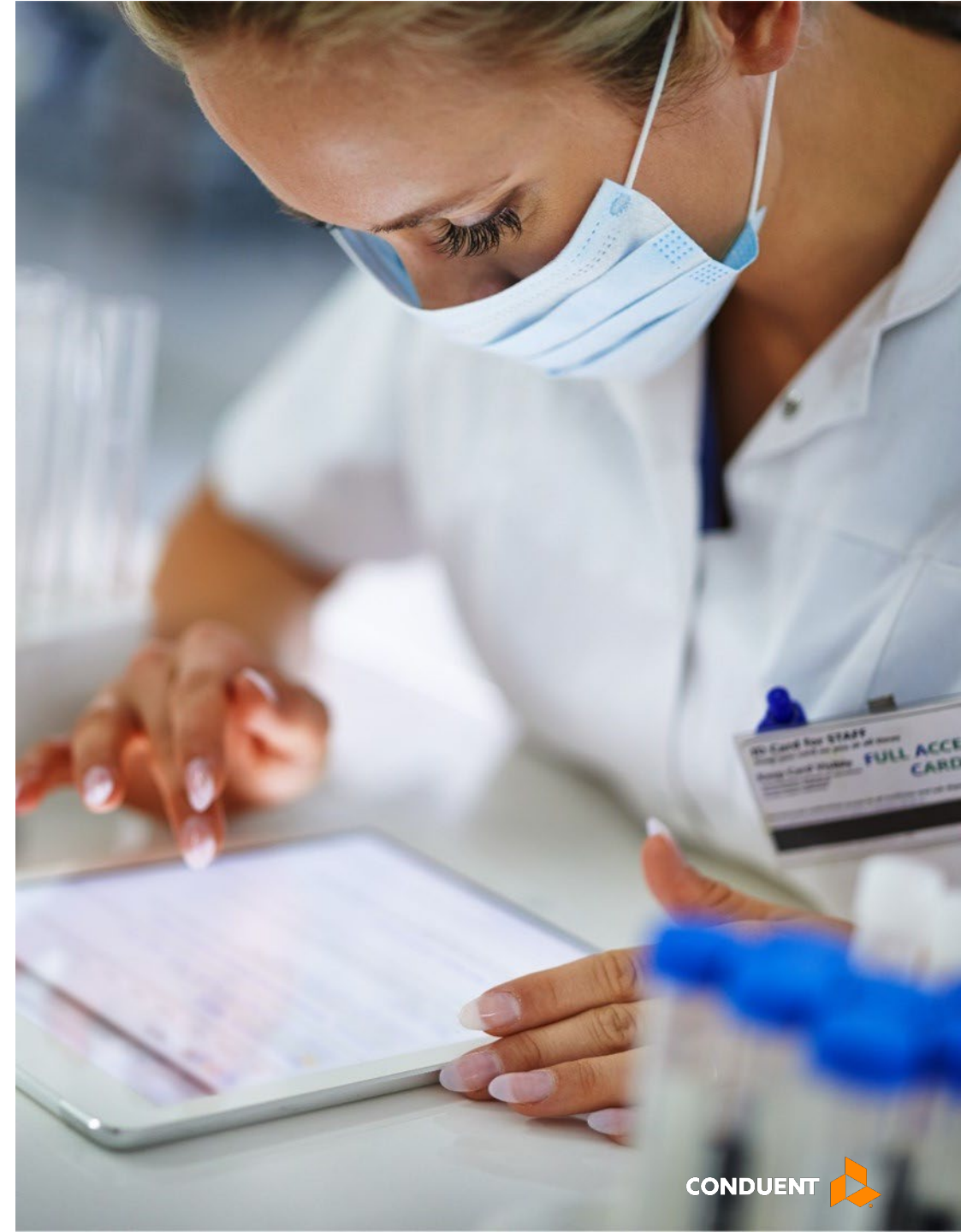
Overview of Maven® Functionality

Demonstration of Maven®


Overview of Healthy Communities Institute (HCI)

Demonstration of HCI Platform

Q & A and Next Steps




Participants




Ron Tinsley
Account Executive



Eddie Rash
Account Manager



Dianna Lydiard, PhD
Subject Matter Expert



Glen Tarrant
Application Architect



Amit Rao
Senior Manager,
Systems Development




Tarun Khatri
Business Product Owner



Kim Day
Senior Business
Development Consultant



Jen Thompson
Director, Community Health
Solutions



Jane Chai
Community Health SME

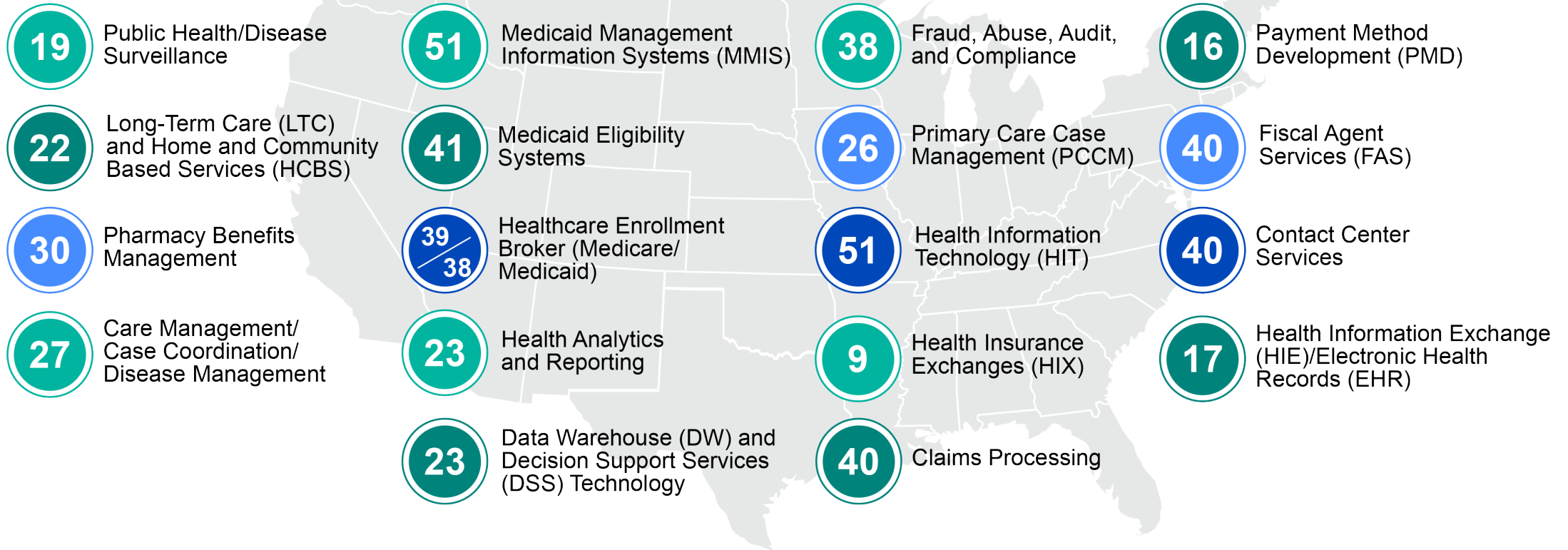
Overview of Conduent

Our History

- 1970** Firm was established as Consultec, Inc. in Georgia.
- 1999** Consultec, Inc. was registered in the State of Delaware as a limited liability company (LLC) and its name was changed to Consultec, LLC.
- 2001** After the company's acquisition by Affiliated Computer Services, Inc. the name was changed to ACS State Healthcare, LLC.
- 2010** Xerox Corporation acquired Affiliated Computer Services, LLC (ACS).
- 2012** The name ACS State Healthcare, LLC was changed to Xerox State Healthcare, LLC.
- 2016** Xerox announces its decision to separate into two standalone publicly traded companies, with one company encompassing Xerox's document technology business and the other comprised of Xerox's business process outsourcing (BPO) business; Xerox completed the separation at the end of 2016.
- 2017** January 1, 2017: Xerox Services splits from Xerox to become Conduent Inc. The business name of Xerox State Healthcare, LLC changed to Conduent State Healthcare, LLC. Today, Conduent State Healthcare, LLC is a limited liability company and a wholly owned subsidiary of Conduent Incorporated.

Our Breadth of Experience

51 Years Government Healthcare Experience Nationwide



Our Promise to Innovation



Named to Top 15 Service & Technology Provider Standout

In February 2022, Conduent was named a Top 15 Service & Technology Provider Standout by Information Services Group (ISG), a leading global technology research and advisory firm. According to the 4Q 2021 Global ISG Index™, Conduent was among the leading providers in the “Building 15” category for the Americas region, based on annual contract value won over the last 12 months, demonstrated outcomes in case studies, and positive client feedback. This is the fourth consecutive quarter Conduent was named to this index.



Named to the GovTech 100 List

In January 2022, Conduent was named to the GovTech 100, an annual list compiled and published by Government Technology magazine as a compendium of 100 companies focused on, making a difference in, and selling to state and local government agencies across the United States.



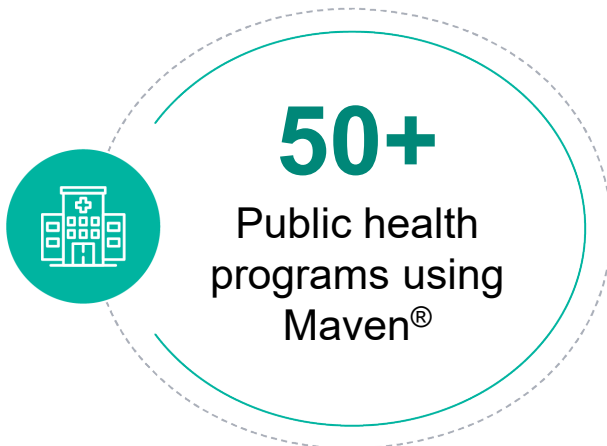
Named to Top Training Companies

In August 2021, Conduent was named to two of Training Industry’s 2021 Top 20 Training Companies™ lists for the 18th straight year.

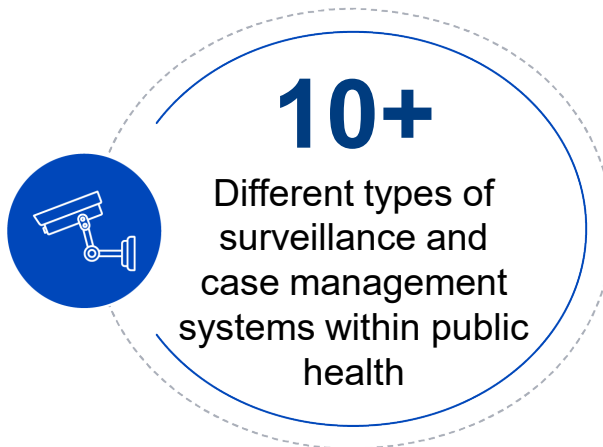
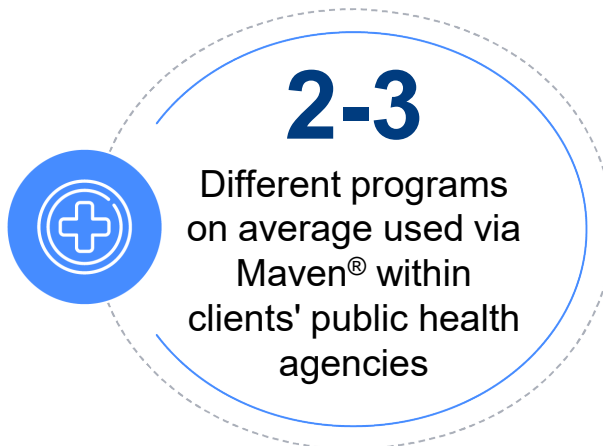
Overview of Maven[®]

Maven[®] Impact on Public Health

Market Share



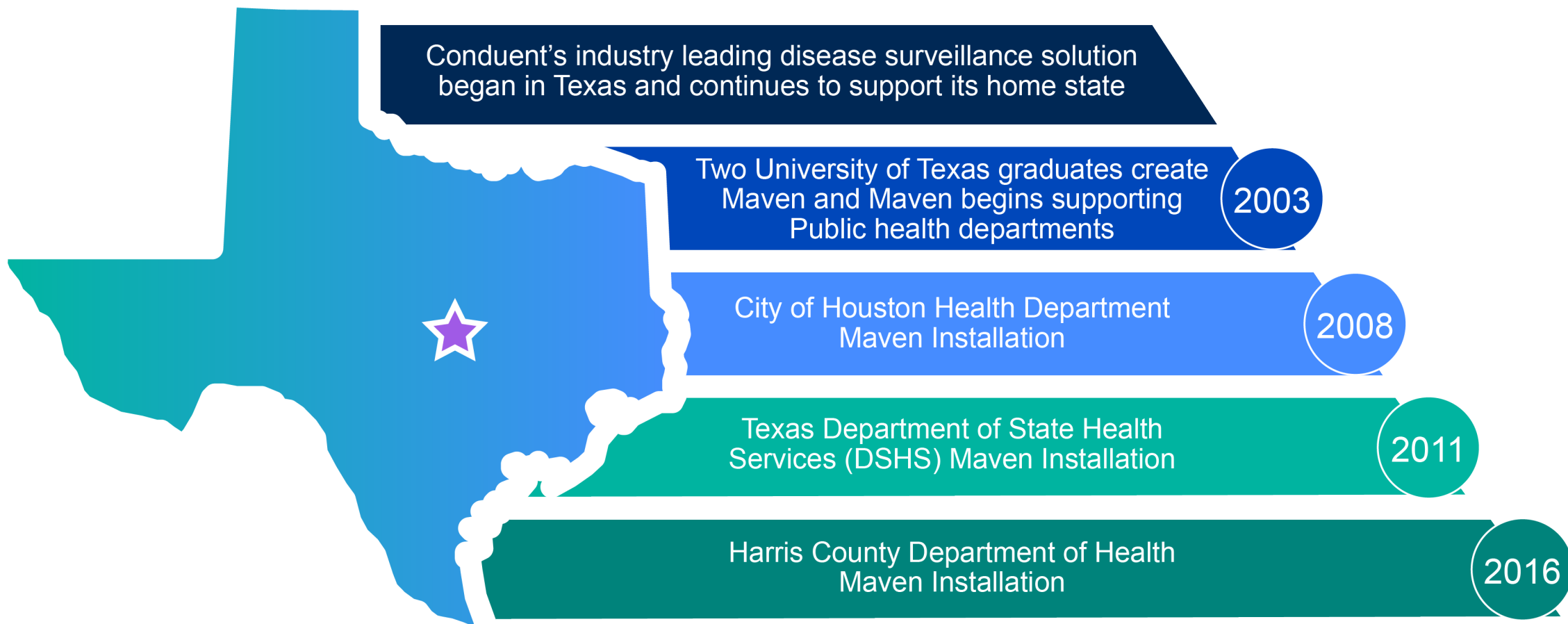
Scale



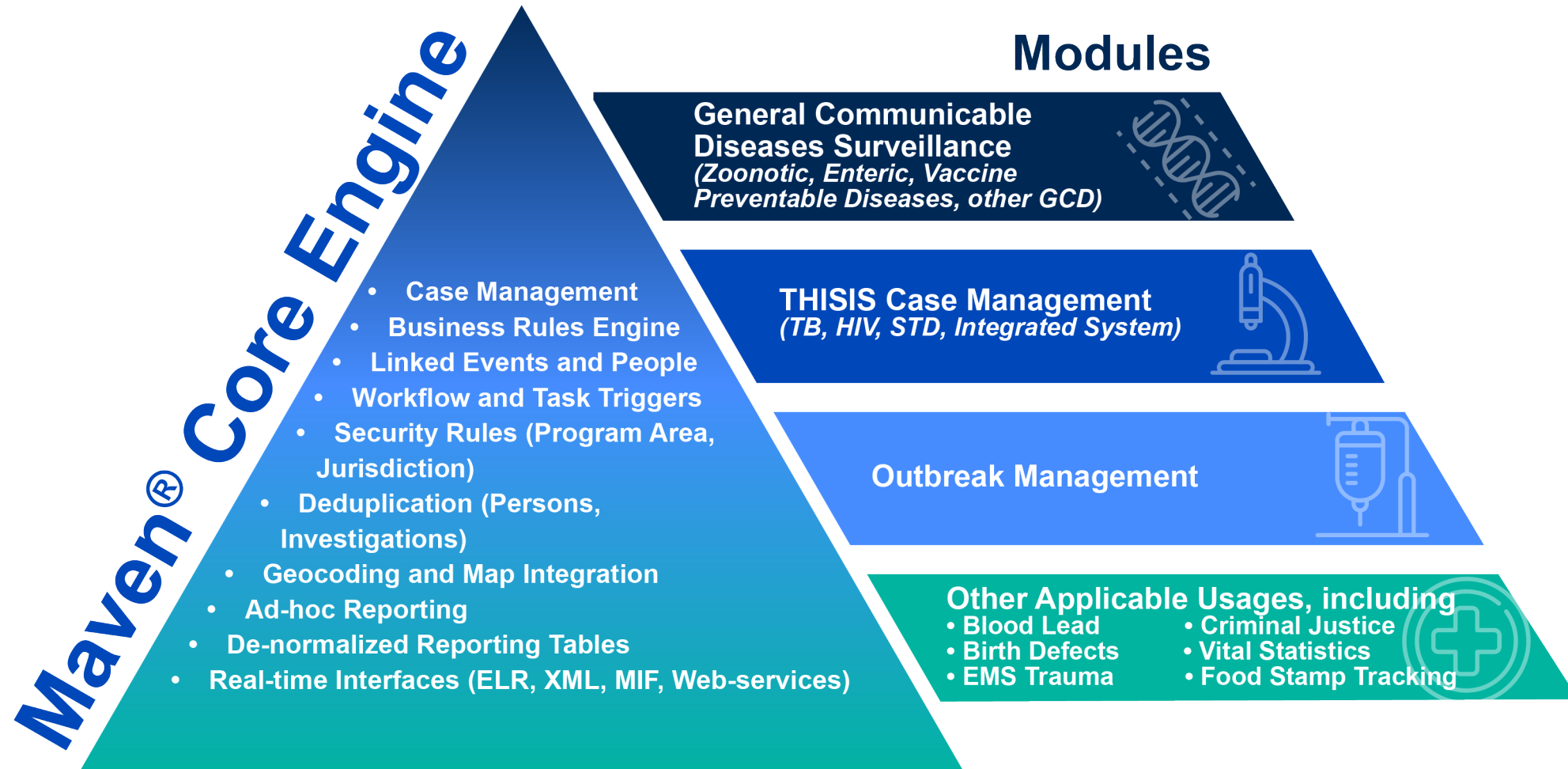
Outcomes



Maven[®] and Texas



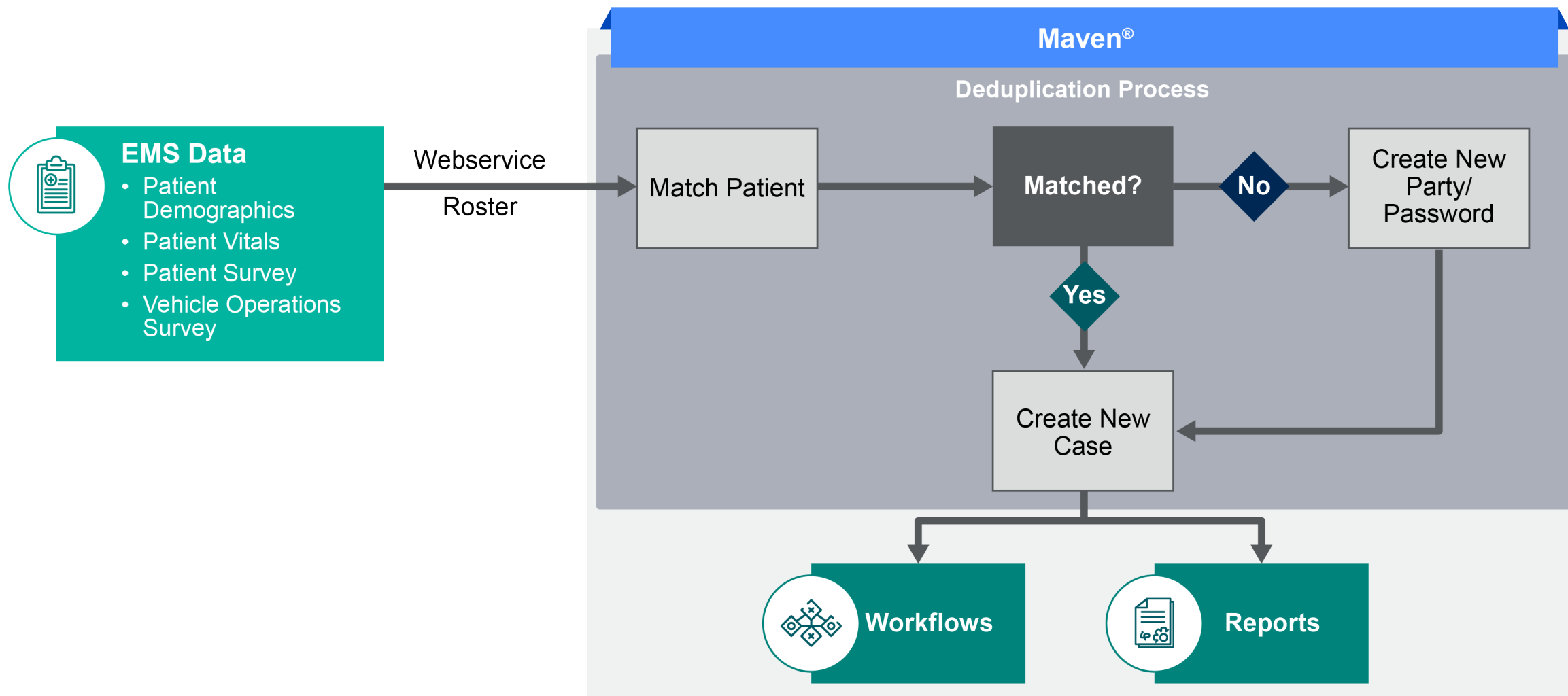
Maven® Core Engine



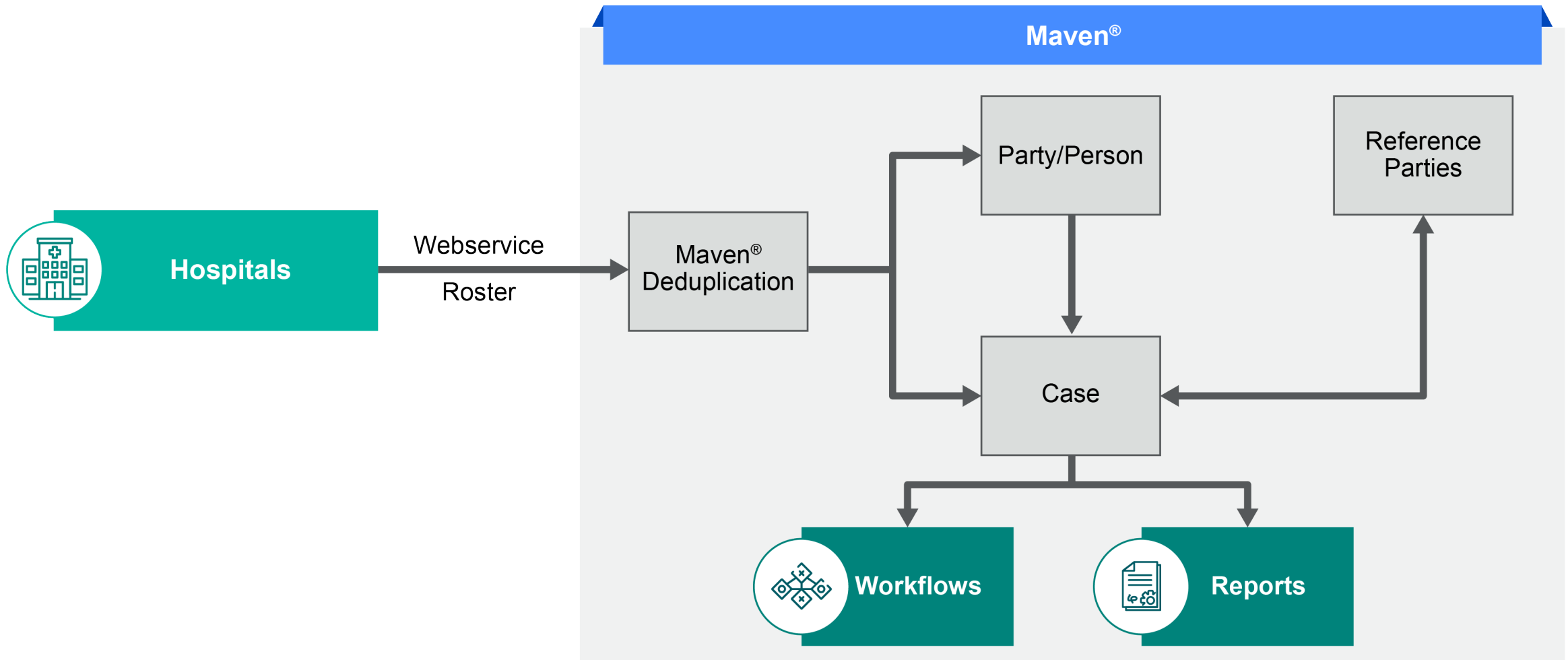
Demonstration of Maven[®]

- Key System Functions
- Reports and Case Summaries
- Integrations
- Outbreak Management

EMS Data to Maven®



Hospital Bed Reconciliation





Overview of Healthy Communities Institute (HCI)

Who We Are

We are a multi-disciplinary team of **public health professionals** providing strategic services and technology for **health equity and community health improvement.**



Impacting 100+ Million lives



100+ community platforms



Over **14** years of experience



250+ community health assessments and plans completed

Healthy Communities Institute (HCI) Clients

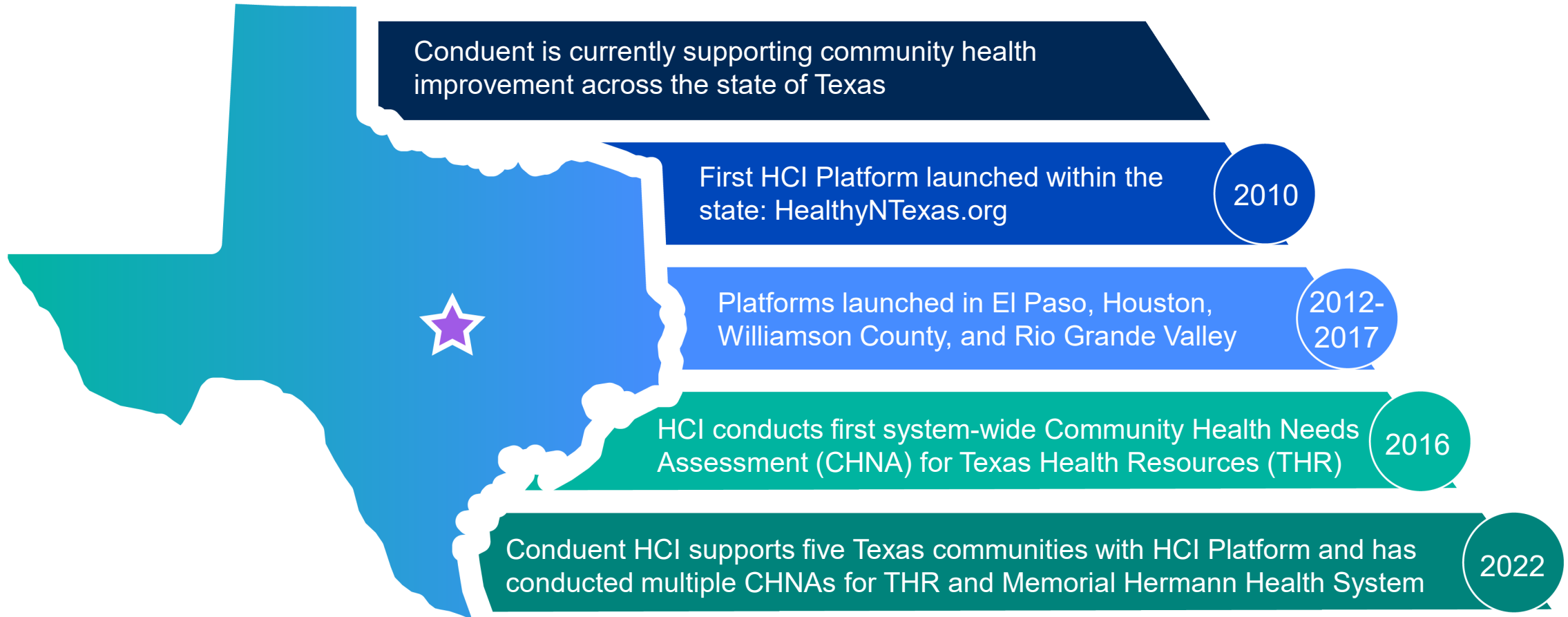
Hospitals and Health Systems

Health Departments

Collaboratives and Nonprofits



HCI and Texas



Anticipated Outcomes

Clear and actionable **insights**
to advance health equity

Deepened community
partnerships to sustain action

Improved community
health **outcomes**

Multi-sector strategy
alignment

Our Approach to Health Equity

Examine disparities:
break out data by
gender, race/
ethnicity,
neighborhood

Analyze social
determinants of
health

Foster community
engagement and
multi-sector
collaboration

Integrate clinical and
community data for
comprehensive
understanding of
barriers and needs

Health and Quality of Life Data

Health Behaviors, Outcomes, and Access

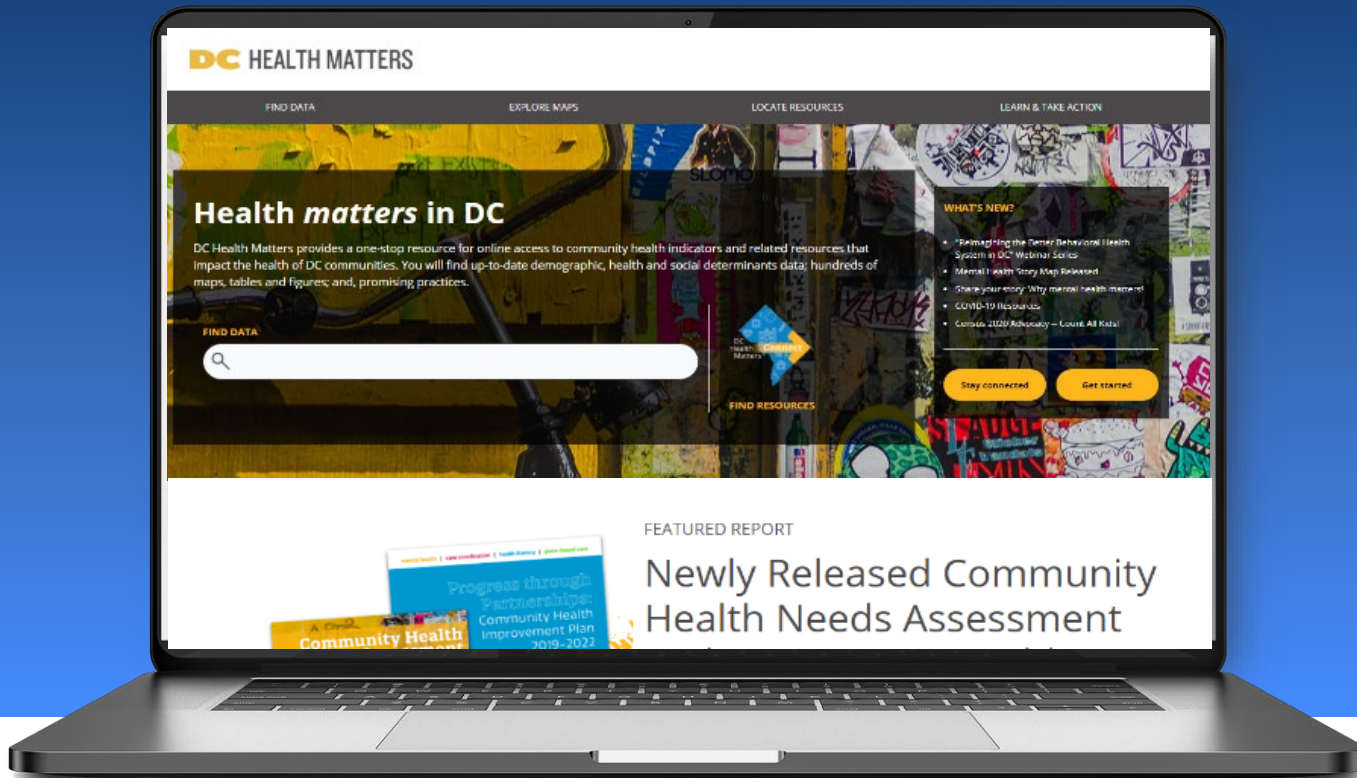
Chronic Diseases
Cancer
Maternal and Infant Health
Mental Health and Substance Abuse
Health Behaviors
Health Insurance and Access



Social Determinants of Health

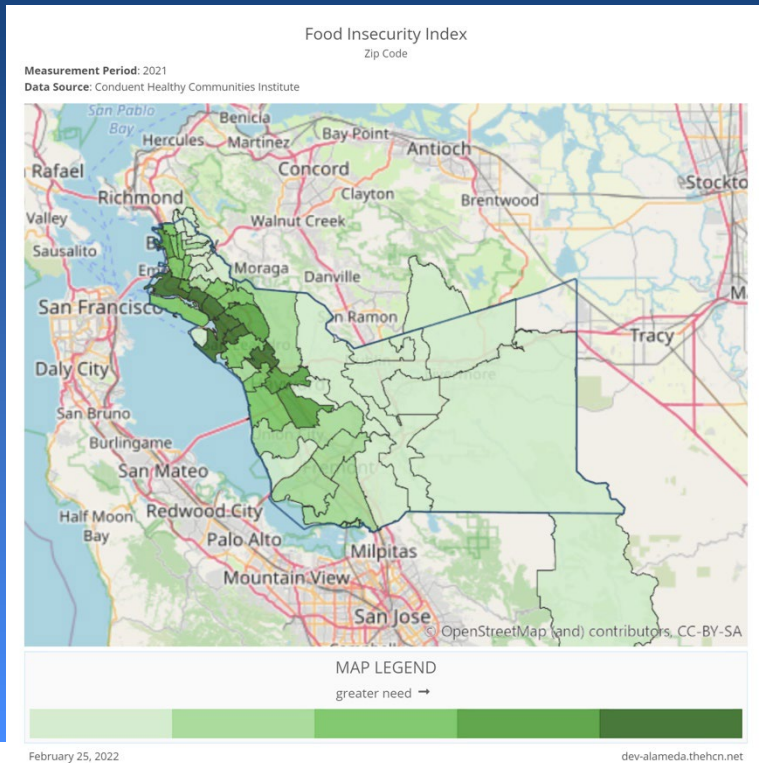
Education
Economy
Housing
Transportation
Income
Public Safety
Environment

Maven[®] Product Demonstration

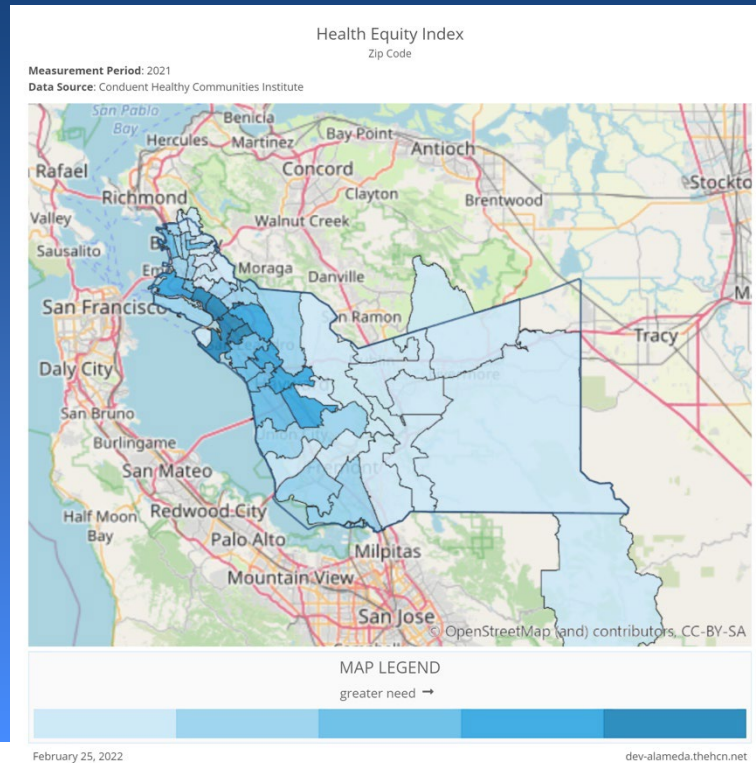


- Customizable platform
- 150+ health, social, and economic data
- Access to dashboards, reporting tools, and library of evidence-based practices
- Ability to incorporate other data sources

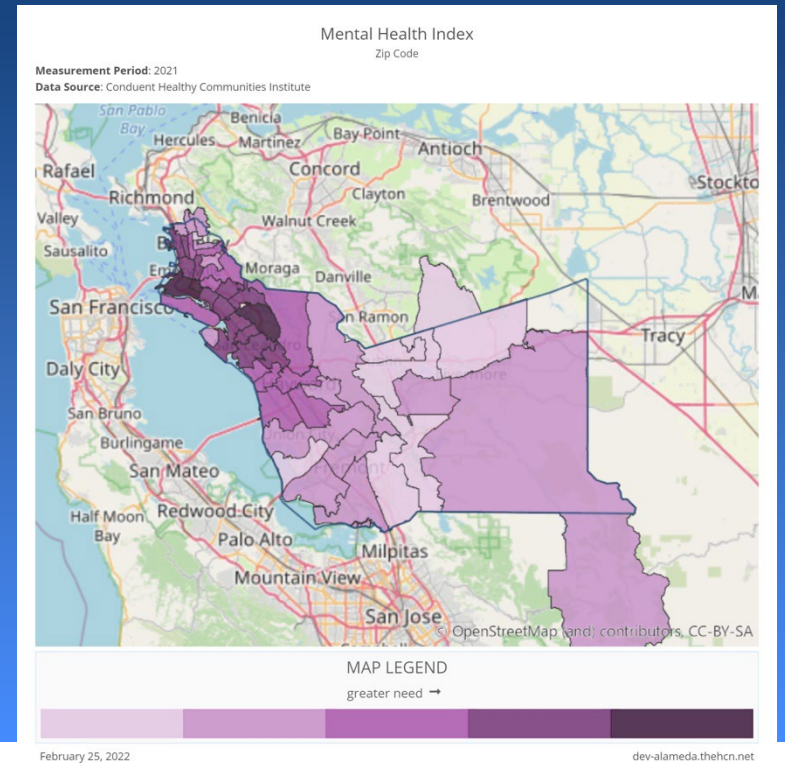
SocioNeeds Index[®] Suite



Food Insecurity Index



Health Equity Index



Mental Health Index

SocioNeeds Index[®] Suite

Food Insecurity Index



- A measure of food access correlated with economic and household hardship
- Considers validated indicators to identify areas at highest risk for experiencing food insecurity

Health Equity Index



- A measure of social determinants correlated with preventable hospitalizations and premature death
- Considers validated indicators to identify areas at highest risk for experiencing health inequities

Mental Health Index



- A measure of social determinants and health factors correlated with self-reported poor mental health
- Considers validated indicators to identify areas for prevention and early intervention

HCI Platform Demonstration

Questions



CONDUENT



The proprietary contents of this presentation are intended solely for use in the procurement process and may not be disclosed except to persons who are involved in the evaluation of the proposal or award of the contract. The contents may not be duplicated, used, or disclosed in whole or in part for any purpose except the procurement process. Release of Conduent proprietary, confidential, and trade secret information would place Conduent at a serious and irreparable competitive disadvantage in future procurements by providing competitors with information that Conduent maintains strictly confidential and which is unavailable to any third-party except under restrictions contained in a nondisclosure agreement or protections that cover this information under applicable law. If a third-party makes a request for disclosure of any of the contents of this proposal, you are requested to notify Conduent immediately so that Conduent will have an opportunity to provide assistance in protecting the proprietary contents of this proposal from unauthorized disclosure.